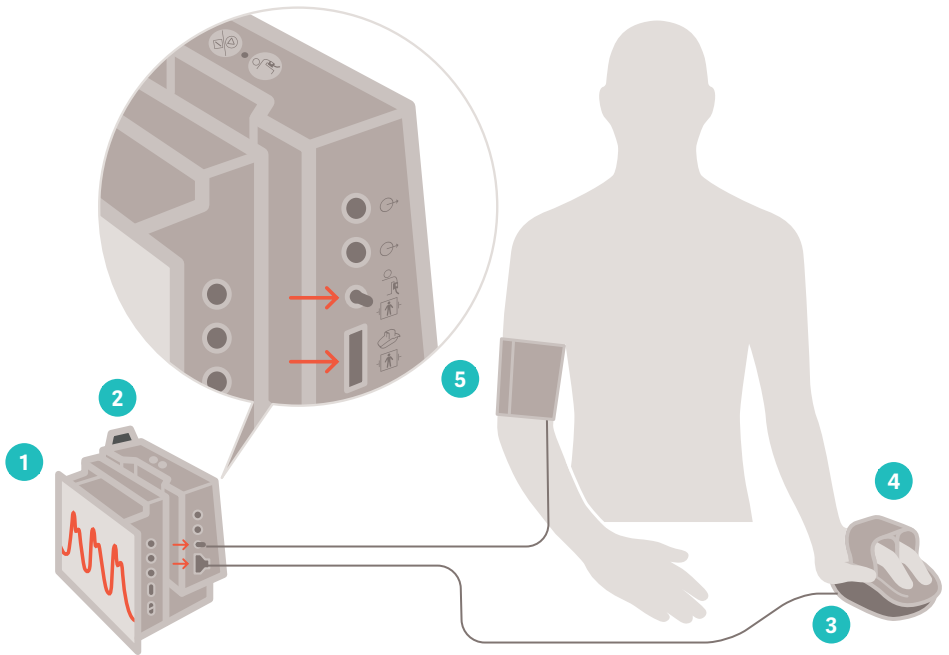


NICCI Short Setup Guide



| No. | Product description | REF | Getinge order # |
|-----|---------------------------|--------|-----------------|
| 1 | PulsioFlex Monitor | PC4000 | 6882747 |
| 2 | NICCI Module | PC6500 | 6889361 |
| 3 | NICCI Mouse | PC6510 | 6889371 |
| 4 | NICCI Sensor, S | PV6550 | 6889384 |
| 4 | NICCI Sensor, M | PV6551 | 6889385 |
| 4 | NICCI Sensor, L | PV6552 | 6889386 |
| 5 | NICCI Upper Arm Cuff, S | PC6531 | 6889375 |
| 5 | NICCI Upper Arm Cuff, M | PC6532 | 6889376 |
| 5 | NICCI Upper Arm Cuff, L | PC6533 | 6889377 |
| 5 | NICCI Upper Arm Cuff, XL | PC6534 | 6889378 |
| 5 | NICCI Upper Arm Cuff Tube | PC6530 | 6889374 |

Step 1: NICCI Setup

A. Install NICCI Module to the PulsioFlex Monitor



- Turn the interface plug protection on the rear of the PulsioFlex device away from the plug.
- Gently move the module in a horizontal direction until it locks into place.



- To unlock and detach the NICCI Module from the monitor push the release button on the top of the NICCI Module and gently remove the module in a horizontal direction from the monitor.

B. Setup NICCI Upper Arm Cuff

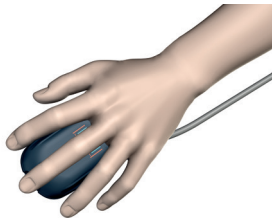


- Select the correct size of upper arm cuff and place it on the patients upper arm (recommended contralateral side to NICCI Mouse). Connect the NICCI Upper Arm Cuff to the NICCI Module.

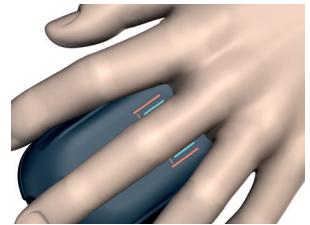
C. Select correct NICCI Sensor Size



- To ensure correct measurement, the use of the correct size of NICCI Sensors is important.
- Use finger size indicator located at bottom of the mouse for size determination.

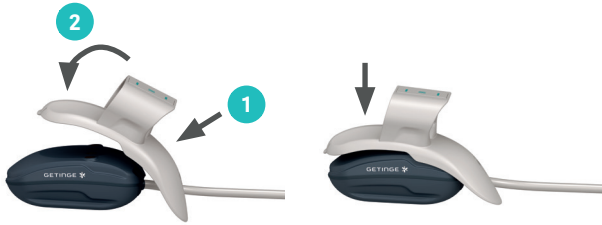


- Place the proximal part of the patient's (index, middle or ring) finger to measure the width of the finger.



- The visible lines indicate the size needed (each color belongs to a specific sensor size).

D. Connect the NICCI Sensor to the NICCI Mouse



Place the NICCI Sensor on the NICCI Mouse (cable sided).

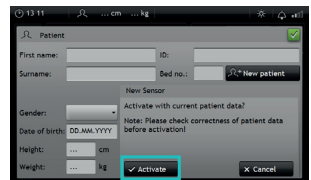
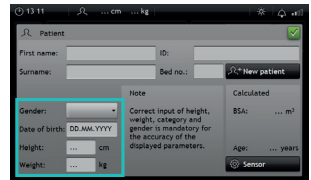
Press/Flip the Sensor forward and down ward onto the NICCI Mouse until a click is heard and felt.



Insert the patients' fingers completely into the NICCI Sensor in the direction indicated on the sensor. The index/middle or middle/ring finger of the left or right hand can be used.

Step 2: Enter patient demographics & activate NICCI Sensor

- Go to the main menu.
- Open the patient settings window.
- Enter all relevant patient data.
- Once entered, the system will ask for confirmation of the data to activate the NICCI Sensor.
- Patient data cannot be changed once sensor has been activated.
- With activating the sensor, the 72h use time starts.

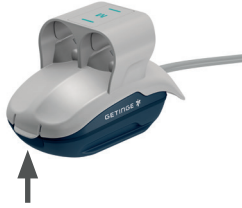


Step 3: Start NICCI Measurement

- Start a NICCI Measurement by pressing the 'Start' button on the monitor or the quick access keys.
- The system will then automatically start, perform a self test, go through a search phase and perform an automatic NIBP calibration.
- After 90 seconds all values should be visible.



Step 4: Stop NICCI Measurement & disassemble NICCI



- Stop the NICCI measurement by pressing the 'Stop' button. Ensure that the measurement has been stopped before removing the patient's fingers.
- In order to detach the NICCI Sensor from the NICCI Mouse, lift the lever on the Sensor and pull upwards.
- Store the Mouse in the intended storage location.



This information is intended for an international audience outside the US and does not replace any individual therapeutic decision of the treating physician. Indications, contraindications, warnings and instructions for use are listed in the separate Instructions for Use.

PULSION Medical Systems SE · Hans-Riedl-Str. 17 · 85622 Feldkirchen · Germany · +49 89 45 99 14-0
zentrale.pulsion@getinge.com

www.getinge.com